

SMC-EZ1016DT and SMC-EZ1024DT (With SMC Green Saving)

EZ Switch™ 10/100



Product Overview

The EZ Switch™ 10/100 SMC-EZ1024DT and SMC-EZ1016DT are 24/16-port Fast Ethernet switches. The 10BASE-T/100BASE-TX ports deliver dedicated 10/100 Mbps links to each attached LAN segment – all with conventional cabling and adapters. Auto-negotiation is used to select the optimal communication mode for each connection. Auto-sensing is used to select the optimal transmission speed for each connection. With store-and-forward switching and flow control, maximum data integrity is always maintained, even under heavy loading. Easy installation and reliability make this plug-and-play switch an ideal choice for smooth Fast Ethernet integration.

Key Features and Benefits

SMC Green Saving

SMC Green Saving Technologies are intelligent, innovative algorithms that detect link status and distance to best save power while maintain performance and stability.

- Power saving by Auto-Detection of the number of active ports
- Power saving by Cable length Auto-Detection

High Performance & Functionality

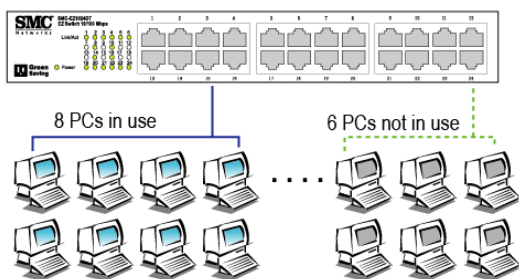
- Switching Fabric of 3.2 or 4.8 Gbps – non-blocking
- Filtering and forwarding at full wire speed on all ports
- Automatic address learning
- Buffered “store-and-forward” architecture prevents propagation of bad packets
- Half- and full-duplex flow control prevents packet loss under heavy loading

Easy to Install and Use

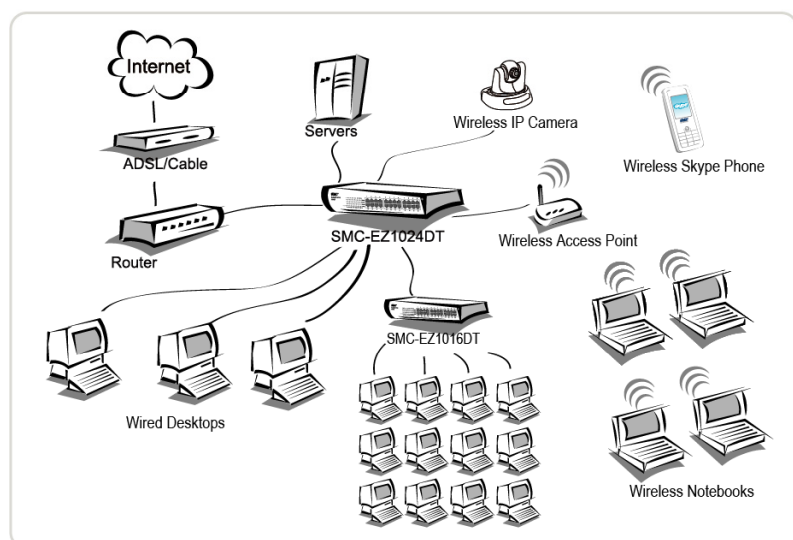
- Plug and Play nothing to configure
- Auto-Negotiation for automatic selection of speed and operating mode
- Comprehensive array of LEDs for “at-a-glance” monitoring of traffic on all segments
- Auto-MDIX ports eliminate concern over cabling and uplinks
- Desktop and rack mountable

Compatibility

- IEEE 802.3, 802.3u
- IEEE 802.3x full-duplex flow control



SMC Green Saving switches will auto-detect the link status and automatically cut off power for a given port during periods of no link (when a port is unconnected or a PC is turned off). After it detects an incoming signal, it wakes up from power saving mode and operates in normal mode.



SWITCHES

VDSL

WIRELESS

VOIP

STORAGE

BROADBAND

ADAPTERS

Features

Physical Ports

- SMC-EZ1016DT: 16 RJ-45 10/100 BASE-T ports
- SMC-EZ1024DT: 24 RJ-45 10/100 BASE-T ports

Indicator Panel

- Power – One LED
- Ports: Link/Act – One LED per Port

MAC Address Table

- 8 K entries

Memory Buffer

- SMC-EZ1016DT: 160Kbytes
- SMC-EZ1024DT: 160Kbytes

Power Consumption

- SMC-EZ1016DT: 6.831 Watts
- SMC-EZ1024DT: 8.514 Watts

Power Requirement

- Input Voltage: 100 - 240 VAC@50-60 Hz

Dimensions and Weight

- SMC-EZ1016DT: 21.6 x 13.3 x 4.2 cm (8.5 x 5.2 x 1.7 in)
- SMC-EZ1016DT: 870g (1.9 lbs)
- SMC-EZ1024DT: 26.7 x 16.1 x 4.2 cm (10.5 x 6.3 x 1.7 in)
- SMC-EZ1024DT: 1376g (3.0 lbs)

Performance

- SMC-EZ1016DT
 - Switch Fabric : 3.2 Gbps (non-blocking)
 - Throughput : 2.4Mpps
- SMC-EZ1024DT
 - Switch Fabric : 4.8 Gbps (non-blocking)
 - Throughput : 3.6Mpps

Regulatory Compliance

- EMC/Safety Compliances
- CE Mark
- Immunity
- EN 61000-4-2/3/4/5/6/8/11
- Emissions
- FCC Class A, CISPR Class A, EN 61000-3-2/3

Environmental Specification

- Temperature: Operating: 0 ~ 40 °C / 32 ~ 104 °F
- Humidity: 10% to 90% non-condensing

Warranty

- 3 Years

Contact Information

SMC Networks Asia Pacific
 1 Coleman Street #07-09
 The Adelphi
 Singapore 179803
 Tel : +65 6338 7667
 Fax : +65 6338 7767

Check www.smc-asia.com for your local country contact information

Other Information

System Requirements

- Computer with 10/100Mbps Network Adapter
- Ethernet cable (not included)

Product Package Contents

- EZ Switch 10/100 (SMC-EZ1016DT or SMC-EZ1024DT)
- Four rubber foot pads
- Rack-mount bracket kit
- Appropriate AC power cord
- This User Manual
- SMC Warranty Registration Card
- Quick Installation Guide